

WATERSIDE

HOLIDAY GROUP



HOLIDAY HOME OWNERSHIP IN DORSET & CORNWALL

Redefining *Luxury*

WATERSIDESALES.CO.UK



BEST UK HOLIDAY PARKS
AND LODGES COMPANY



- Five star facilities
- Coastal location
- Luxurious spa
- Indoor & outdoor pool
- Multiple bars and restaurants

- Overlooking Chesil beach
- Indoor pool
- Entertainment for everyone
- Award-winning restaurant
- Easy access to Weymouth and Portland

- Luxury lodges
- Outdoor pool
- Idyllic woodland location
- Children's play park
- Sea views

- Views of the Looe Valley
- Peaceful & scenic location
- Indoor pool
- New bar & restaurant
- Nature trails and wildlife lakes

Holiday
homes from
£39,995

WATERSIDE HOLIDAY PARK
BOWLEAZE COVE, WEYMOUTH,
DORSET, DT3 6PP
01305 836 836

Holiday
homes from
£39,995

CHESIL VISTA HOLIDAY PARK
PORTLAND ROAD, WEYMOUTH,
DORSET, DT4 9AG
01305 752 566

Holiday
lodges from
£124,995

OSMINGTON LODGE PARK
OSMINGTON MILLS, WEYMOUTH,
DORSET, DT3 6HB
01305 818 171

Holiday
homes from
£49,995

TREGOAD HOLIDAY PARK
ST MARTINS, NR LOOE,
CORNWALL, PL13 1PB
01503 390 004

WATERSIDE HOLIDAY GROUP

★★★★★

Redefining *Luxury*

The South West region is brimming with fascinating history, award-winning golden sands and stunning natural beauty. Experience it all with holiday home ownership at our exquisite parks in Dorset and Cornwall. Each park has its own unique character, but one thing is certain for all – they offer the ideal opportunity to spend quality time creating cherished memories with loved ones. Relax in your home away from home as you unwind in luxury at our truly beautiful sites.

Three of our parks are nestled along the spectacular Jurassic coastline with a fourth in the heart of unspoilt Cornish countryside. Whether you choose Waterside, Chesil Vista, Osmington or Tregoad, you'll be treated to a friendly and fabulous stay. For fans of the sea, you'll be sure to love the stunning coastal views from our park at Chesil Vista. Waterside not only has fantastic facilities, but also sits on the beach and is perfect for a shoreline stroll at sunrise. Of course, you'll also be able to discover the South West Coast path, stunning cliff-top views and boat trips.



For those who prefer to be closer to nature, Osmington is surrounded by tranquil woodland and a rich variety of wildlife. There are also quaint towns such as Bridport and Dorchester close by, as well as idyllic countryside, museums and galleries all waiting for you – as is the peacefulness of the spa at our Waterside park. And for those who relish a mix of tradition and adventure, our newest park in Cornwall, Tregoad, offers a modern twist on holiday home ownership. There's plenty to see and do, and with a wealth of attractions nearby, you and your family will be perfectly placed at one of our remarkable parks to explore the area time and time again.

Family run for
58 years

£9.5 million
reinvestment
in the last 6 years

Four
5-star
luxury parks

Over
600
owners
across all 4 parks



Welcome to *Waterside Holiday Park*



WATERSIDE

HOLIDAY PARK & SPA



Nestled on the beach at Bowleaze Cove and surrounded by Dorset's Jurassic coastline – Waterside is a unique setting for your holiday hideaway. Luxurious holiday homes and a choice of fun-filled and unwinding pleasures – it's your own piece of paradise.

The Experience

Five star facilities

A beautiful, modern and stylish retreat with all the comforts of home.

Coastal location

You'll never tire of the beach setting, coastal paths and spectacular views.

A choice of quality dining

Enjoy a leisurely lunch by the waters edge or a family meal with entertainment.

Stunning scenery

Be captivated by Dorset's natural beauty with coastal walks and sunrise strolls.

Luxurious Spa

Indulge in some relaxation and beauty treatments within an opulent and tranquil space.

State of the art leisure complex

Grown ups can feel great and unwind and children will be spoilt for choice.



“We love the variety
at Waterside, when the
family join us there is so
much for them to do.
All the staff on the park
are just wonderful,
we have known some
of them for years.”





Relax or play at *Waterside*

Right by the water in one of the most loved seaside towns in the UK –
Waterside brings all of the pleasures of a perfect holiday to your doorstep.

The Park

The leisure complex at Waterside is your space to use however you wish. A hideaway from the speed of life with a choice of luxurious spa, relaxing sun terrace, heated swimming pool, sauna and fantastic restaurants.

Or up the pace and indulge in all of the indoor and outdoor leisure facilities available to you – gym, waterslides, soft play, astro football pitches, children's splash pool, toddler pool and lively family entertainment.

That's the beauty of Waterside, you pick the pace and enjoy a stay which you and your loved ones will treasure.

For more information on holiday home ownership, call or visit

01305 836 836 | WATERSIDESALES.CO.UK

Find us on [f facebook.com/WatersideGroupSales](https://www.facebook.com/WatersideGroupSales)



Swimming

We take our inspiration for the park from our wonderful surroundings and the joy of water. So, it's no surprise that swimming features highly on our list of entertainment.

Take your pick from: Heated indoor swimming pool – Heated outdoor swimming pool – Two waterslides – Children's splash pool – Toddler pool with slide – Family changing rooms – Pool viewing area.

And if you still have any energy, the beach is just a stone's throw away.

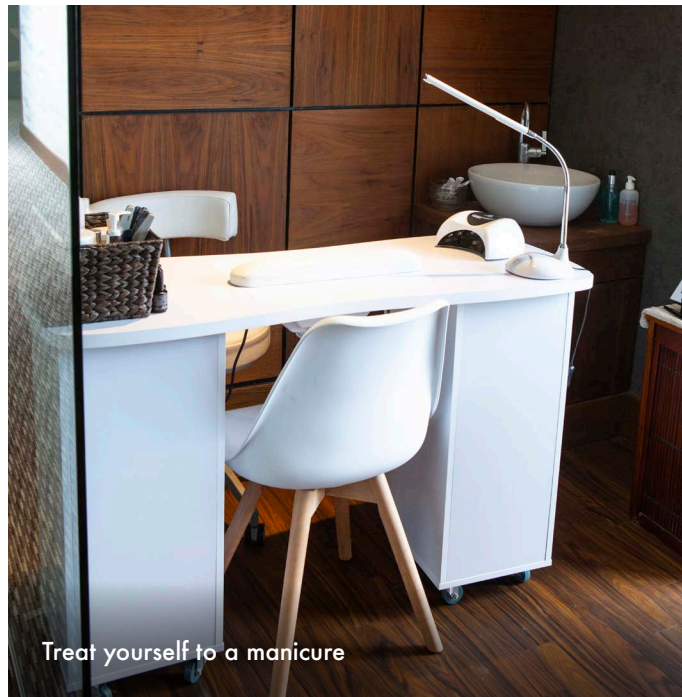




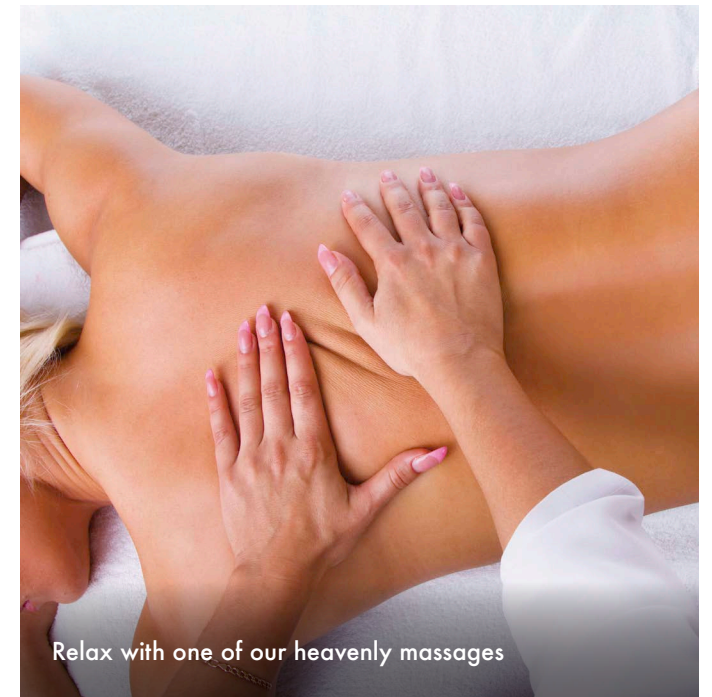
The Spa at Waterside

You'll receive a warm welcome at our luxury spa and treatment rooms. Indulge in a sauna, hydrotherapy pool, rainforest shower or aroma steam.

There's also a range of treatments available including manicures, pedicures, tinting, tanning, waxing and facials. And no spa experience is complete without a heavenly massage – choose from Indian head massage, bamboo massage, hot stone massage and also reflexology.



Treat yourself to a manicure



Relax with one of our heavenly massages

Eating & Drinking

The Waterside Venue

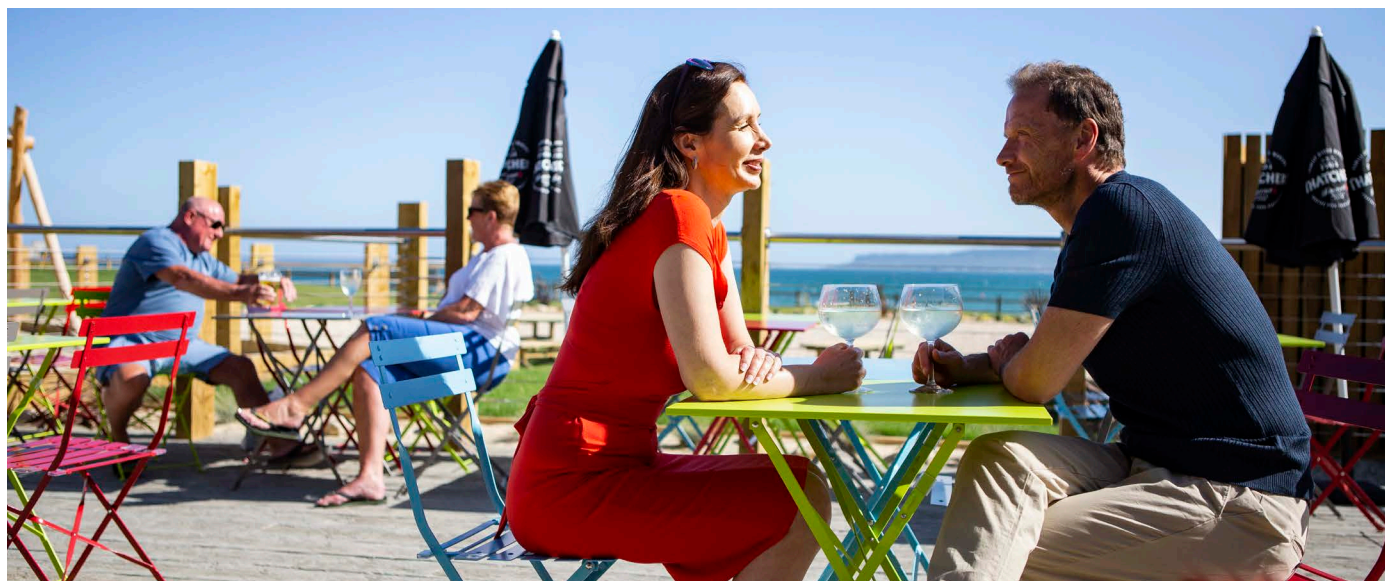
Your entertainment hub by the sea with a fully licensed bar is where you'll find all the lively entertainment. Our evening entertainment includes singers, comedians, bands and tribute acts, bingo, game shows, discos and quizzes, and we run a variety of free family activities throughout the day.

Southside Bar & Grill

With over 1 million pounds of investment, Southside Bar & Grill is Weymouth's newest beachside restaurant, celebrating a fantastic location at Bowleaze cove. It has a quirky modern interior and large outdoor seating area, perfect for soaking up the sunshine or keeping an eye on your little ones whilst they enjoy the outdoor play area. You'll love the local ingredients, seafood specials and healthy kid's menu.

The Waterside Takeaway

When you've had a fun packed day at Waterside, sometimes you'll fancy grabbing a takeaway and enjoying it at your holiday home – or even on the beach. Our takeaway offers family favourites from fish and chips to pizza.





The Shack

Stroll into our chilled beachside bar with stunning sea views. Choose from a selection of craft beers, quality wines, and fun cocktails. With acoustic guitarists providing entertainment throughout the season, simply relax while you enjoy the outdoor play area. You'll love the local ingredients, seafood specials, and healthy kid's menu.

The Sports Bar

You will never need to miss any of your favourite sporting events at our Sports Bar. It caters for all the family and has as much live sport as you could wish for. There is a Costa Coffee and food served all day. Plus, a soft play area and a rooftop terrace.

The Dog House

Located next to The Shack, our latest food offering serves hot dogs, burgers and loaded fries. The perfect accompaniment to your cold drink in the sunshine.



Facilities & Activities

Owner events

As an owner you will enjoy a unique programme of events through the year, from summer parties to cabaret acts and the ever popular Live @ The Shack with great live music by the beach.



On park activities

Looking for something extra to do? Try your hand at archery, learn to swim, or hire a kayak.

Football pitch and outdoor gym

With their hill top position, the football pitch and outdoor gym are in a great location. So get some fresh air, keep fit and enjoy amazing views!



Indoor and outdoor play areas

Children can have fun in any of our three play areas including our great indoor soft play area located within the Sports Bar.

Gym

Keep in shape at our gym based in the leisure complex featuring cardio machines, weight machines and free weights.



Cove Lodges

DISCOVER UNRIVALLED LUXURY

Ready for viewing in 2021, our suite of ten new luxury lodges at Waterside Holiday Park offer a unique Dorset sanctuary in an exclusive gated community. Our Cove Lodges feature light, spacious and modern accommodation with the latest amenities. It's a brand new way to enjoy a coastal getaway.







Welcome to *Chesil Vista Holiday Park*



Stop for a moment. Take in the view of the Fleet Lagoon, and beyond to the Isle of Portland. You'll be charmed by the surrounding unspoiled beauty of 5 star Chesil Vista. This is one of the most unique holiday home locations in the country.

The Experience

Overlooking Chesil beach

You'll fall in love with the panoramic sea views from Dorset's 18-mile Chesil Beach.

Idyllic location

Just three miles from Weymouth town centre with direct access to the South West Coastal Path.

Entertainment for everyone

We can promise there's something for all members of your family to enjoy at Chesil Vista.

Relax in luxury

This is your time to unwind and a luxurious and comfortable setting is the best place to start.

Spacious, modern & well equipped

Your luxurious home offers true comfort and style.



“We love visiting Weymouth and
always dreamt of having a place
for weekend breaks and longer
family holidays.

Our holiday home at Chesil
Vista is the perfect retreat after
a hard day exploring.”





Discover *Chesil Vista*

With all there is to experience in beautiful Dorset, there's still so much to keep you right here. Spend some time relaxing in the pool or enjoying a delicious meal and live show.

The Park

Chesil Vista is the perfect gateway to the stunning Jurassic Coast, one of UK's most beautiful coastlines. Life can get hectic sometimes, so leave your busy life at home and focus on living life the Chesil way. Chesil Vista is the perfect place to wine and dine or sit back, relax, and simply enjoy the views of Chesil Beach from the comfort of your own holiday home.

However you choose to spend your time relaxing – as a getaway to rejuvenate your soul, making memories with friends and loved ones, or cramming in enough fun-filled activities to make you breathless, one thing's for sure... Chesil Vista is ready and waiting.

For more information on holiday home ownership, call or visit

01305 752 566 | WATERSIDESALES.CO.UK

Find us on [f facebook.com/WatersideGroupSales](https://www.facebook.com/WatersideGroupSales)

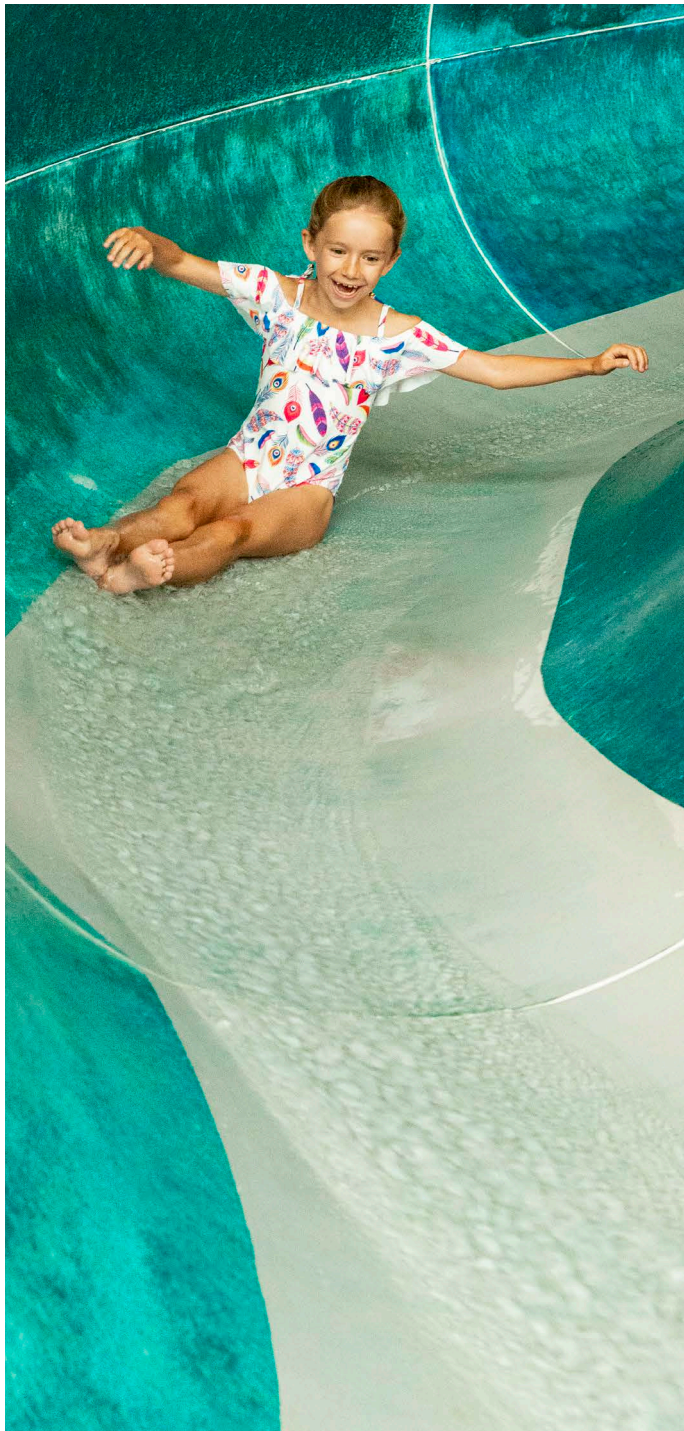


Wine & Dine

Enjoy a meal in our delightful modern restaurant or make the most of summer with al fresco dining on our beautiful sun terrace overlooking the Fleet and Portland. If you still have any energy, the beach is just a stone's throw away.

Our partnerships with local suppliers ensure that our fresh produce is sourced from the Jurassic Coast including Blue Vinny and Dorset Red cheeses, and Portland crab.





Everything you need!

With its unique location and range of facilities, Chesil Vista has everything you need to make you feel at home.

- Heated indoor pool with slide and spa pool
- Sauna
- Gymnasium
- Indoor soft play area
- Outdoor adventure play area
- Pool tables
- Outdoor gym
- Sports field
- Outdoor terrace with views across Chesil Beach
- Chesil Venue Bar and entertainment area
- Breeze Bar & Grill
- Launderette

The Jurassic Coast

Every time you open your door you will find yourself walking through 185 million years of history in this unique environment and World Heritage site.

The 95 miles of the Jurassic Coast is home to natural wonders such as Durdle Door, the golden cliffs at West Bay and the unique marine life at Kimmeridge and, of course, our very own Chesil Beach.

There are so many places to explore and ways to experience this unique environment – on bike, foot or in your own boat or kayak. Your new home in Weymouth really is set in the heart of history.



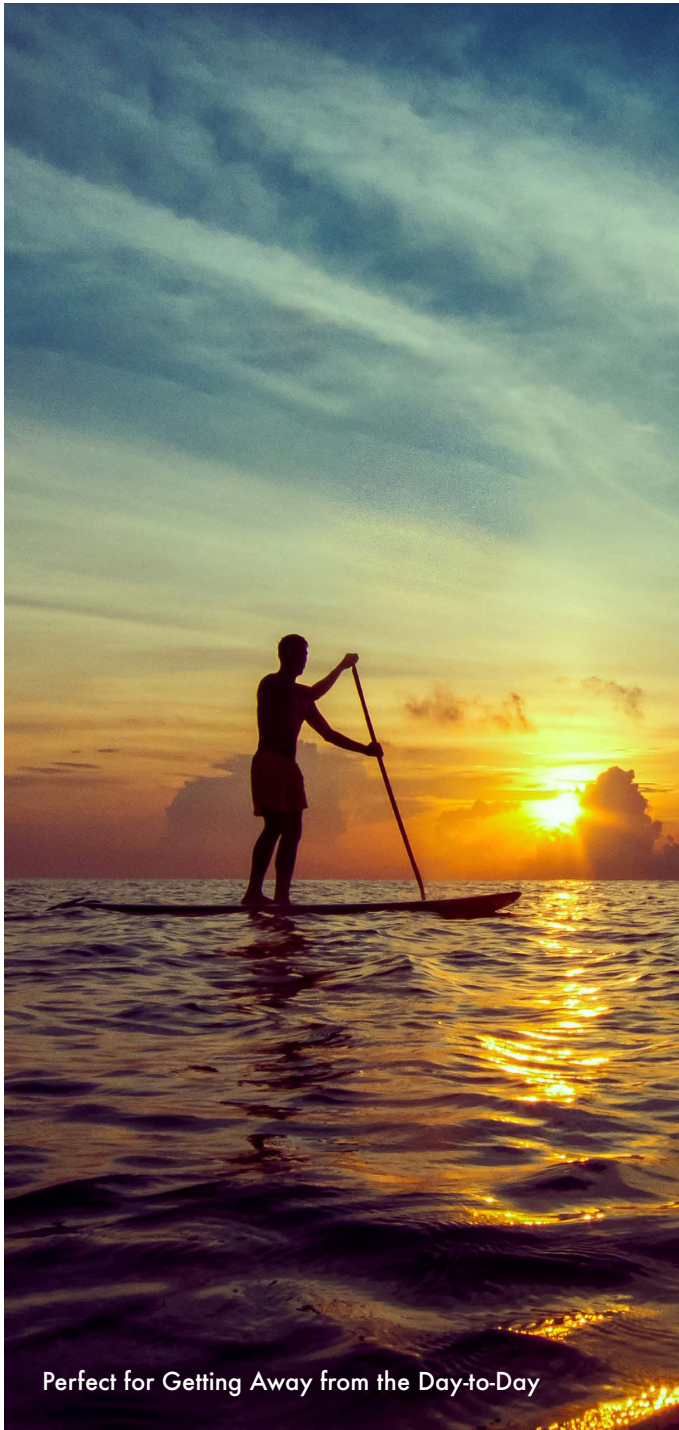
Corfe Castle



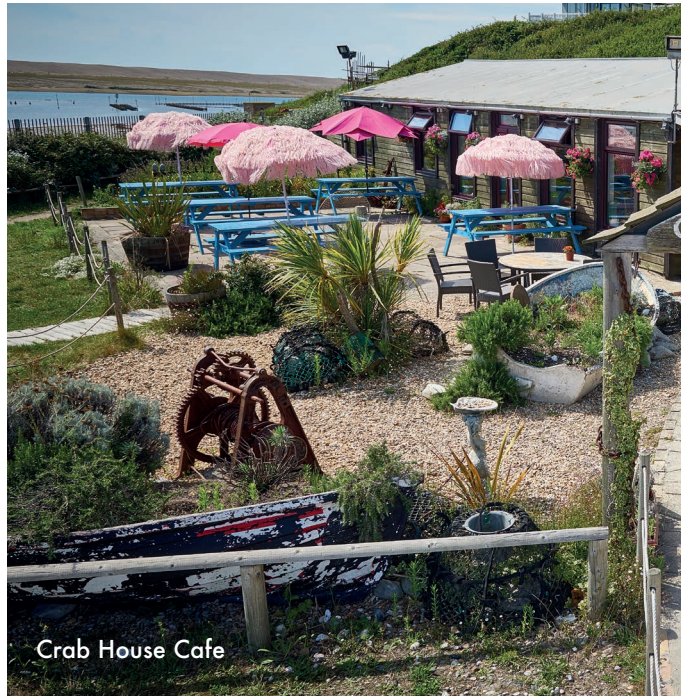
Portland Bill Lighthouse



Durdle Door



Perfect for Getting Away from the Day-to-Day



Crab House Cafe



Billy Winters



The Cove

Dining out

Leave the car and take a short stroll to the amazing Crab House Cafe with its fresh food, relaxed atmosphere and great views. There are so many other places to eat and drink around Chesil Vista. You must try The Cove or Billy Winters, so friendly... so Dorset.



Welcome to Oswington Holiday Park



Down a country lane in the peaceful hamlet of Osmington Mills, our lodge park nestles in a beautiful wooded valley that drops down to Osmington Beach and unfolds to spectacular sea views. Within the park, our gorgeous lodges provide the perfect rural retreat.

The Experience

Luxury lodges

First time visitors never fail to be amazed by the sheer beauty of our stunning lodges.

Idyllic woodland location

Pretty, secluded and enveloped in natural woodland.

Countryside & Sea Views

Our park provides the perfect spot for enjoying woodland views of Osmington Mills and sea views across Weymouth Bay.

Country Club

Relax in the bar, restaurant, swimming pool and sun terrace. There's also a garden with a children's play area to enjoy.

Designed for living

Our luxury lodges offer open plan living, state-of-the art kitchens and appliances, modern bathrooms and relaxing bedrooms.

Large balconies

Many of our lodges benefit from extra outdoor space with glass balconies providing an unhindered view.





Discover Osmington

Without question, the beauty of Osmington is the woodland surroundings and the lovingly designed lodges. Our lodge owners will tell you it's a little oasis of luxury, relaxation and peace.

The Park

Osmington has a very special atmosphere. Set in the heart of the woods overlooking Weymouth Bay, Osmington is the very definition of tranquillity. With the Country Club providing delicious food and drink and a refreshing swim – there's little reason to leave the park at all!

But we're sure you'll want to take the footpath to the waters edge at least. You'll find a shingle beach with rock pools to explore and spectacular views of the rugged coastline. Venture out a little further and you'll find Weymouth's famous golden sandy beach and a choice of bars and restaurants.

And when you're ready, retreat to the peaceful setting of your luxurious Osmington home. Entertain guests on your spacious balcony, enjoy a stroll to the Country Club for a drink and a bite to eat or lay back, close your eyes and clear your thoughts.

There's nowhere else quite like Osmington to relax and unwind, all within one of Dorset's most picturesque valleys.

For more information on holiday home ownership, call or visit

01305 818 171 | WATERSIDESALES.CO.UK

Find us on [f facebook.com/WatersideGroupSales](https://www.facebook.com/WatersideGroupSales)



“Owning a holiday home here has enriched our life in ways I never dreamed of. It’s an escape from everyday life whenever we need it.”



The Country Club

Home to the licensed bar and restaurant, the exclusive Country Club overlooks the swimming pool and sun terrace. The bar serves a tempting selection of tasty snacks and meals, all which you can enjoy at your lodge if you wish. There's plenty of opportunities for family relaxation here with complimentary Wi-Fi, a lounge, pool table, and a garden with children's play area.





Welcome to *Tregoad Holiday Park*



TREGOAD

HOLIDAY PARK



Located in the heart of the stunning Cornish countryside, our newest holiday park is the perfect destination for those who can't get enough of hiking, biking and more. Stay in comfort, explore at leisure. It's where local tradition and adventure call home.

The Experience

Unique location

Discover beautiful Cornish beaches, traditional fishing villages and acres of unspoilt countryside on your doorstep.

Made to explore

The perfect place to escape from the everyday hustle and bustle and get back to nature. Where tradition meets adventure.

A touch of luxury

Holiday homes designed for the modern lifestyle, where luxury comes as standard. Enjoy impeccable levels of comfort and service at Tregoad.

Fun for the whole family

Relax in the pool, dine in the restaurant, or explore the local area. Our park brings the whole family together for an adventure.





Discover *Tregoad*

From picturesque Cornish fishing villages and coveted coves to historic local landmarks just a short drive inland, Tregoad is the perfect base from which to explore one of the country's most popular holiday and adventure destinations.

The Park

Since adding Tregoad Holiday Park to the Waterside Holiday Group Family in 2020, we've launched an ambitious programme of upgrades to bring you even more comfort and amenities. You'll find our new Stargazy restaurant and bar, super fast Wi-Fi, as well as some familiar favourites like the indoor pool.

With a range of modern holiday home options available, there's something to suit everyone.

For more information on holiday home ownership, call or visit

01503 390 004 | [WATERSIDESALES.CO.UK](https://www.watersidesales.co.uk)

Find us on [f facebook.com/WatersideGroupSales](https://www.facebook.com/WatersideGroupSales)

Wine & Dine

Our new Stargazy restaurant and bar offers fresh local specialties, as well as serving some of Cornwall's signature tipples in our bar and terrace area.

And we also encourage you to explore some of the foodie hotspots on our doorstep. You'll find fresh fish, shellfish and signature Cornish cream teas in nearby Looe, Polperro and Fowey. It's a gastronomic paradise.





Everything you need!

We think we've thought of everything, but we're still only getting started. Here's how to keep busy at Tregoad...

- Indoor pool
- New Stargazy restaurant, cafe and bar
- Super fast Wi-Fi
- Onsite shop
- Launderette
- Kids' adventure play area
- Dog walking area
- Games room with pool table
- Wildlife lake
- Private decking & BBQ area available for all holiday homes





WATERSIDE
HOLIDAY PARK & SPA
★★★★★



CHESILVISTA
HOLIDAY PARK
★★★★★

Holiday Homes
from £39,995

TO DISCOVER ALL OUR STOCK,
VISIT THE PARK.

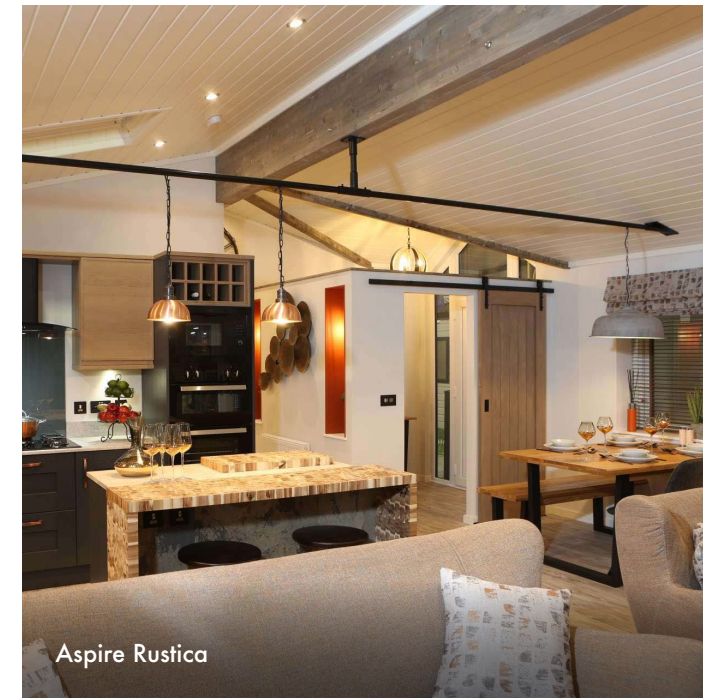





OSMINGTON
HOLIDAY PARK
★★★★★

Holiday Lodges from £124,995

TO DISCOVER ALL OUR STOCK,
VISIT THE PARK.



TREGOAD

HOLIDAY PARK



Holiday Homes
from £49,995

TO DISCOVER ALL OUR STOCK,
VISIT THE PARK.



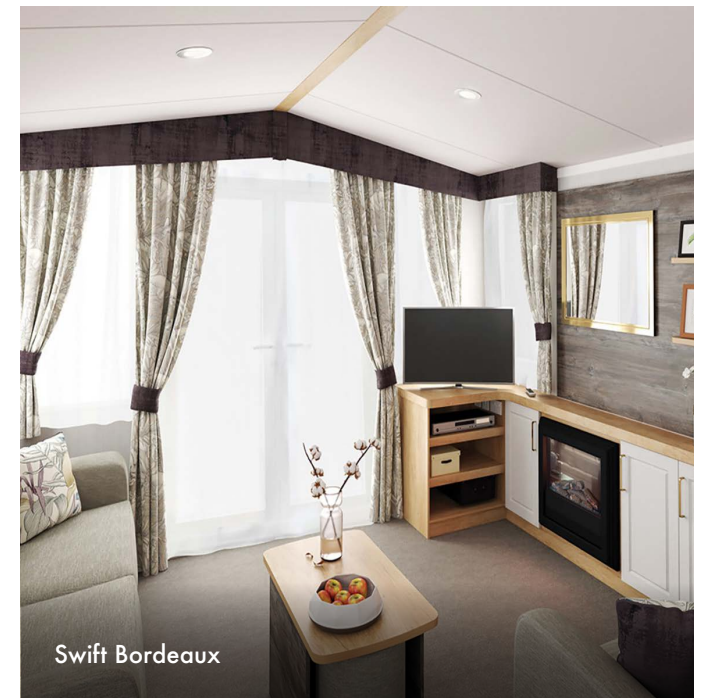
Pemberton Langton



Willerby Vogue



Prestige Sapphire



Swift Bordeaux

Owners Privileges

01

Free use of facilities

02

15% discount in our bars & restaurants across all four parks

03

Bookable complimentary Waterside Spa Experience

04

15% discount on treatments & products in The Spa

05

10% watersports hire discount

06

Access to facilities for any guests accompanied by you, no need for individual passes

07

Security barrier access 24/7

08

Concierge service

09

Complimentary bus travel between Weymouth and Waterside

10

Exclusive owners' events and discounts throughout the year

Finance Options

At the Waterside Group you can purchase your new or pre-loved holiday home outright with a one-off payment or join the majority of our customers in taking our easy funding package.

- Low fixed rate APR
- Terms from 24 months to 120 months*
- Early settlement available* (T&Cs on request)



*Maximum age limit of holiday home applies.

Site Fees for the 2021 Season



£7,295.00*



£5,495.00*

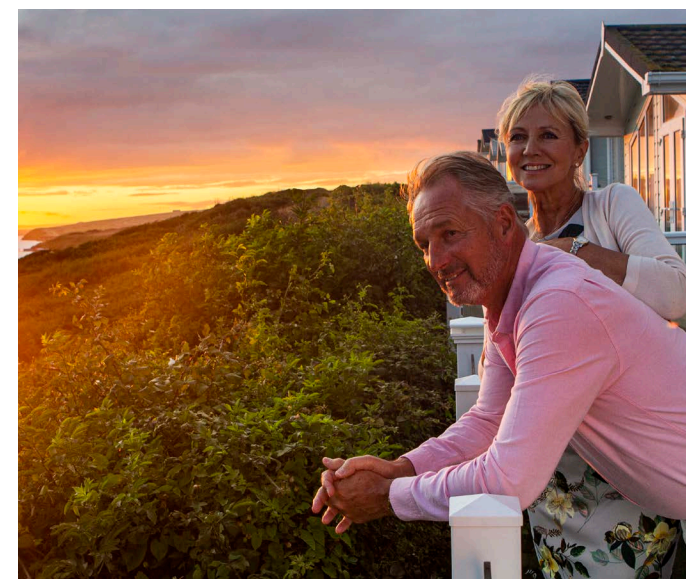


£6,895.00*



£3,600.00*

*Plus additional running costs: Metered Gas • Metered Electric • Insurance • Water • Rates. Additional charges apply to lodges.



Lettings Package

We manage and understand booking trends to always remain reactive to market conditions and ensure we maximise your holiday home occupancy.

Our Promise

- ✓ Fully managed, marketed and cleaned by the Waterside Group
- ✓ All bookings, payments, guest correspondence, key handling, check in/check out services included
- ✓ Flexible dates – let from as little as 1 week
- ✓ Let midweek, weekends or the full week
- ✓ Complimentary minor inventory top ups & replacements
- ✓ Fixed Rate Commission: 21% + VAT



Book your *experience day*

And receive a £20 lunch voucher*
Find out how easy it is, just follow
these three simple steps...

01

Book your free experience
day on 01305 836 836.

02

Explore the park &
our fantastic facilities.

03

Enjoy lunch on us with
a £20 lunch voucher.*

*Customer must book an appointment, discover the park & facilities
with one of the park team members and view a selection of holiday
homes from the exhibition to receive the £20 lunch voucher.
Voucher can be used at any of the restaurants at the Waterside
Holiday Group during normal opening hours.



5 Easy steps to purchasing your holiday home

01

Fall in love with
the park

02

Make sure the running
costs are comfortable
for you

03

Find a beautiful holiday
home & choose an
available location
to put it on

04

Pay a deposit & arrange
a date to financially
complete the purchase

05

Move in & start
enjoying your new
lifestyle within
3 weeks!

Enjoy your
new home
within
*3 weeks**

*Subject to stock and pitch availability.

FAQ's

Why should I choose the Waterside Group?

We were established in 1963, and ever since we have sought to be the market leaders within our industry. We seek to provide an unrivalled holiday home ownership experience with service to reflect the sought after holiday homes on the prestigious park. Our continual programme of investment has seen millions of pounds invested to improve our parks and the service that we offer, and this will continue moving forward. Most importantly, our commitment to service and personal connection with our holiday home owners is extremely important to us. We are here to help you every step of the way.

Can my friends & family visit?

Most certainly! For many, being able to invite family and friends to stay is part of the joy of owning a holiday home. We are happy to make the arrangements and greet your family and friends onto the park if you are unable to. Use of all the leisure facilities is complimentary for all of your immediate family (parents, grandparents, children and grandchildren). Wider family (such as uncles, aunties, brothers and sisters) receive complimentary entry to our entertainment venues and are very welcome to use the leisure facilities for a small charge. There is no external membership available to our facilities, all the facilities are exclusively for owners and holiday makers.

Can I choose the location of my holiday home?

Yes, for new and pre-loved holiday homes we will show you which locations are suitable for the size of holiday home you are purchasing and then the choice is yours!

Are there age limits on the holiday home?

No, we do not have an age limit for the holiday homes on our parks, however we do require them to be kept in a good condition. The licence was drawn up in association with our industry trade body, the British Holiday Home and Parks Association (BH&HPA), in association with the Office of Fair Trading.

Can I live in my holiday home?

No, Waterside Holiday Group is designed to be enjoyed as your perfect retreat, not as a permanent residence.

How many months is the park open for?

Waterside, Chesil and Tregoad are open from the 1st March to the 15th January every year giving you an amazing 46 week season. This means you can enjoy your holiday home over the Christmas and New Year period if you so wish. Most on-park facilities are open from mid March until the end of October. Osmington is open from 15th March to the 15th January.

Do I own the land?

No, you own your holiday home, but not the land upon which it is sited.

Can I bring pets?

Certainly. As an owner you are welcome to bring your pet with you particularly as the surrounding area is fantastic for dog walking. As it is a family park we do restrict certain breeds of dog (please ask for details) and request that they are kept on a lead whilst in the park.

What do site fees cover?

The annual site fees include park maintenance, security and also all elements of the owners package which is why The Waterside Group is so special.

Do you offer insurance for holiday homes?

Yes, and we are able to provide you with a quotation.

Is it possible to let my holiday home?

Yes, fully managed letting packages are available through our award-winning holiday's brand.

Next steps...

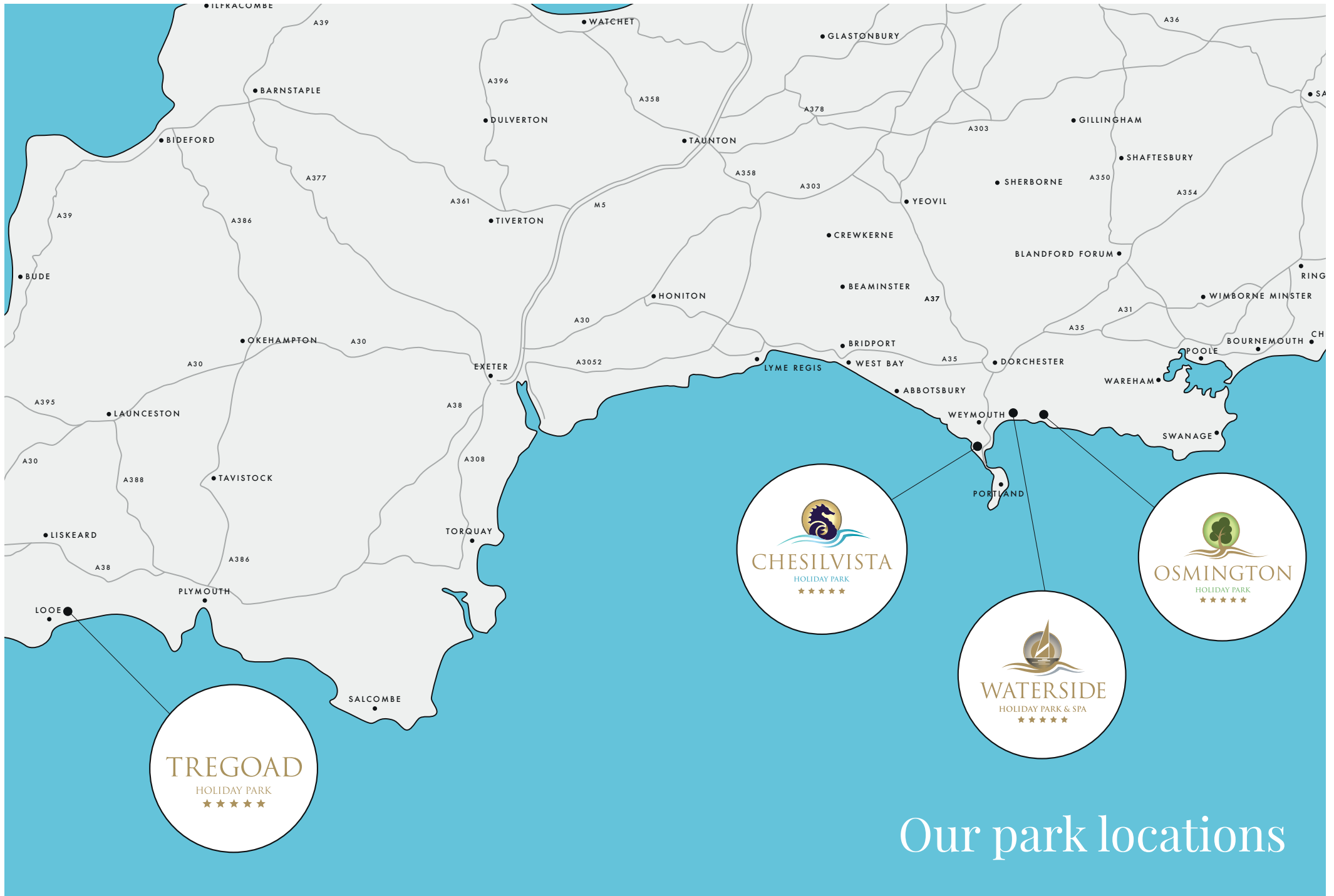
Securing your holiday home is quick and simple and we guarantee you'll wonder why you haven't done this sooner. But we would recommend a personal guided tour before you make any decisions on your Waterside park and location. We're excited to introduce you to our fabulous parks and welcome you to the Waterside way of life. You deserve this!

For more information on holiday home ownership, call or email

01305 836 836 | SALES@WATERSIDEHOLIDAYS.CO.UK

Book your
experience
day





Our park locations

Experience some of the delights of Dorset or Cornwall, whether it's a day at Weymouth Beach or a walk around the Eden Project, you'll be spoilt for choice with what the areas around our parks have to offer.

Days out in Dorset



01
Weymouth
Beach,
Weymouth



02
Sea Life Park,
Weymouth

03
Farmer
Palmer's,
Organford



04
Monkey World,
Nr Wool



05
Corfe Castle,
Corfe



06
Swanage
Railway,
Swanage

and Cornwall...



01
The Lost Gardens
of Heligan,
Pentewan



02
Eden
Project,
Bodelva

03
Looe,
Cornwall



04
Lantic Bay,
Fowey



05
Lanhydrock House
and Garden,
Bodmin



06
Polperro,
Cornwall

Family run for
58 years

£9.5 million
reinvestment
in the last 6 years

Four
5-star
luxury parks

Over
600
owners
across all 4 parks



For more information on holiday home ownership, call or email
01305 836 836 | SALES@WATERSIDEHOLIDAYS.CO.UK